

Expedition to Antarctica



Humpback whale near Pleneau Island

LOGBOOK

ON BOARD "LE DIAMANT"
FROM JANUARY 15TH 2008
TO
JANUARY 24TH 2008

Captain Jean Philippe Lemaire
Staff Captain Ronan Guillé
Cruise director Jérôme Pierre

Expedition Team

Ignacio Rojas	Jean-Pierre Sylvestre
Claudia Roedel	Samuel Blanc
Nathalie Thibault	Dennis Wille
Tim Hostiuck	Jean Baptiste Strobel
Patty Hostiuck	Christophe Lefort
Sylvain Mahuzier	Nicolas Dubreuil
René Preller	

LOGBOOK

Wednesday, January 15th, 2008

54° 48'S
65° 49'W
WIND FORCE 6
AIR T° 6°C
SEA T° 7°C

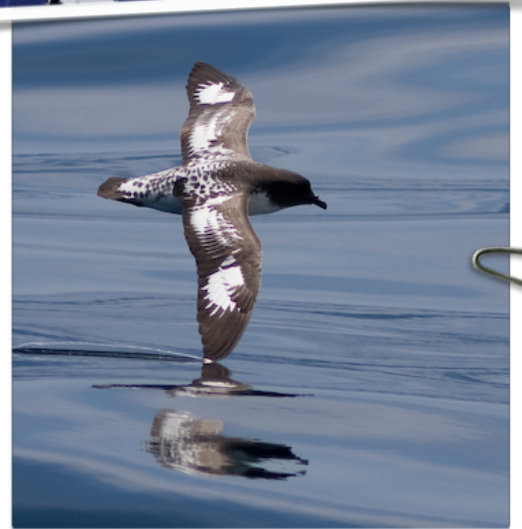
At sea, between Ushuaia and the South Shetland Islands

Ushuaia comes from a Yamana name which means « A bay protected from the west winds » (ushu = at the end, waia = bay)

Sir Francis Drake (1540-1596) who managed the first British expedition around the world, discovered accidentally the place where the Atlantic and Pacific Oceans meet, today named the Drake Passage.



Giant petrel



Antarctic Prions



Cape Petrel



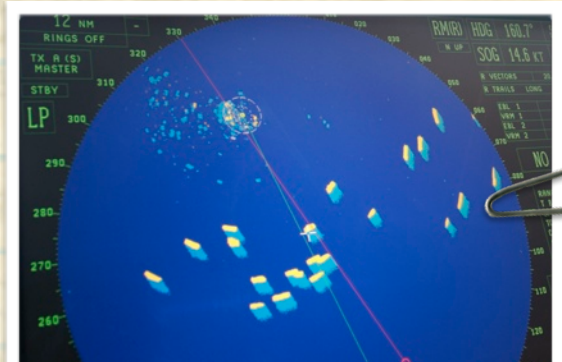
Black browed Albatross

LOGBOOK

Thursday, January 16th, 2008

60° 53'S
60° 48'W
WIND FORCE 4
AIR T° 3°C
SEA T° 2,1°C

At sea, between Ushuaia and the South Shetland Islands



We encounter our first iceberg. It is a Tabular iceberg, probably fallen from an ice shelf and drifting here.

We can easily see the different snow layers that show the ice age.



Humpback whale



Tabular Iceberg



We cross the Antarctic convergence and we see a rapid drop in the sea surface temperature, from around 6°C to 2°C. The temperature change is often associated with mist.

LOGBOOK

Thursday, January 17th 2008

HALF MOON
62° 36'S
59° 55'W
WIND FORCE 1
AIR T° 11°C
SEA T° 2,1°C

BAILY HEAD
62° 58'S
60° 30'W
WIND FORCE 2
AIR T° 4°C
SEA T° 1,7°C

South Shetland Islands Half Moon Island and Baily Head



Chinstrap penguins



Weddell seal



Dike, volcanic formations



Weddell seal



Chinstrap penguins on a lava beach at Baily head



Antarctic Hair Grass

LOGBOOK

Friday, January 18th, 2008

PENDULUM COVE
62° 56'S
60° 36'W
WIND FORCE 1
AIR T° 4°C
SEA T° 2,7°C

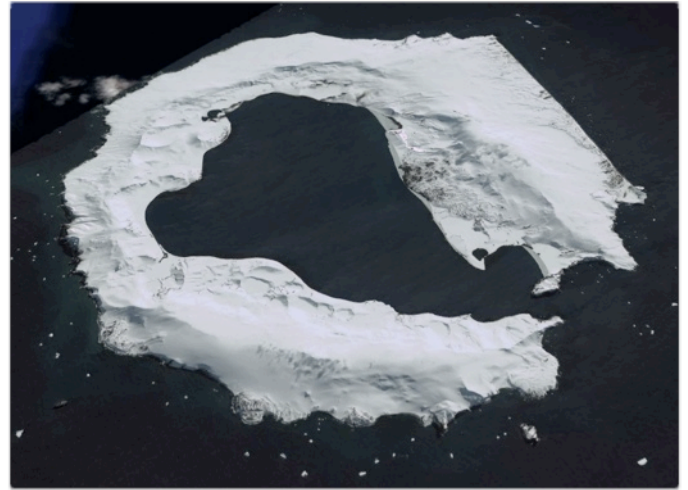
TELEFON BAY
62° 56'S
60° 40'W
WIND FORCE 3
AIR T° 3°C
SEA T° 2,7°C

South Shetland Islands

Pendulum Cove and Telefon Bay in
Deception Island

Deception Island was used intensively by whalers at the turn of the 20th century. The whaling station operated from 1911 to 1931.

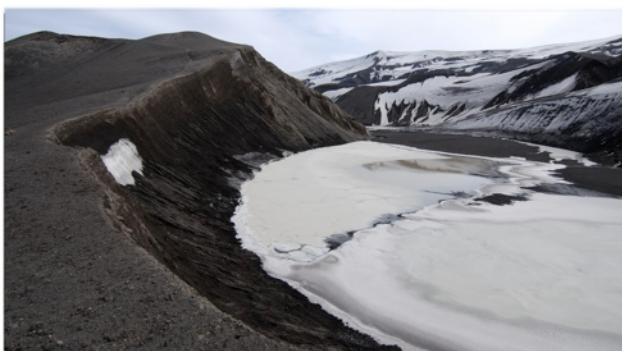
After the second world war, the place was occupied by British (1944), Argentineans (1947) and Chileans (1952).



Fumaroles



Gentoo penguin



Crater at Telefon Bay



Pendulum Cove

LOGBOOK

Saturday, 19th January 2008

NEKO HARBOR
64° 50'S
62° 33'W
WIND FORCE 2
AIR T° 4°C
SEA T° 2°C

PORT LOCKROY
64° 49'S
63° 30'W
WIND FORCE 2
AIR T° 5°C
SEA T° 2°C

Antarctic Peninsula

Neko Harbor, Paradise Bay
and Port Lockroy

The plankton is composed of vegetal microorganisms (Phytoplankton) and animal (zooplankton) living in the upper layer of the ocean.

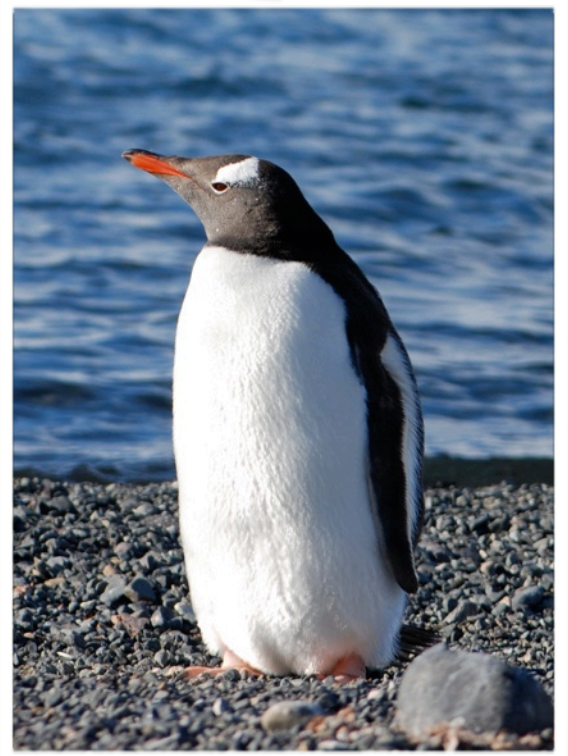


Paradise Bay



Snowy sheathbill

Port Lockroy



Gentoo Penguin

LOGBOOK

Sunday, 20th January 2008

PETERMAN ISLAND
65° 10'S
64° 10'W
WIND FORCE 2
AIR T° 4°C
SEA T° 1,7°C

PLENEAU ISLAND
65° 06'S
64° 04'W
WIND FORCE 3
AIR T° 4°C
SEA T° 1,7°C

Antarctic Peninsula

Peterman Island and Pleneau Island

In 1904, Jean-Baptiste Charcot (French explorer) overwintered in Booth Island near Pleneau Island (named for his photographer) on board "Le Français".

Then, in 1909, he overwintered a second time in Port Circumcision at Peterman Island with his ship "Pourquoi Pas?" ("Why not?")



"Pourquoi pas?" in Port Circumcision



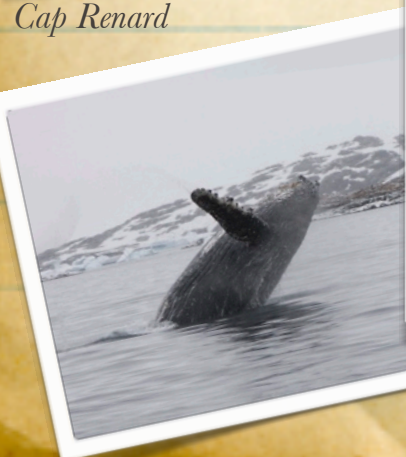
Leopard Seal



Adelie Penguins



Cap Renard

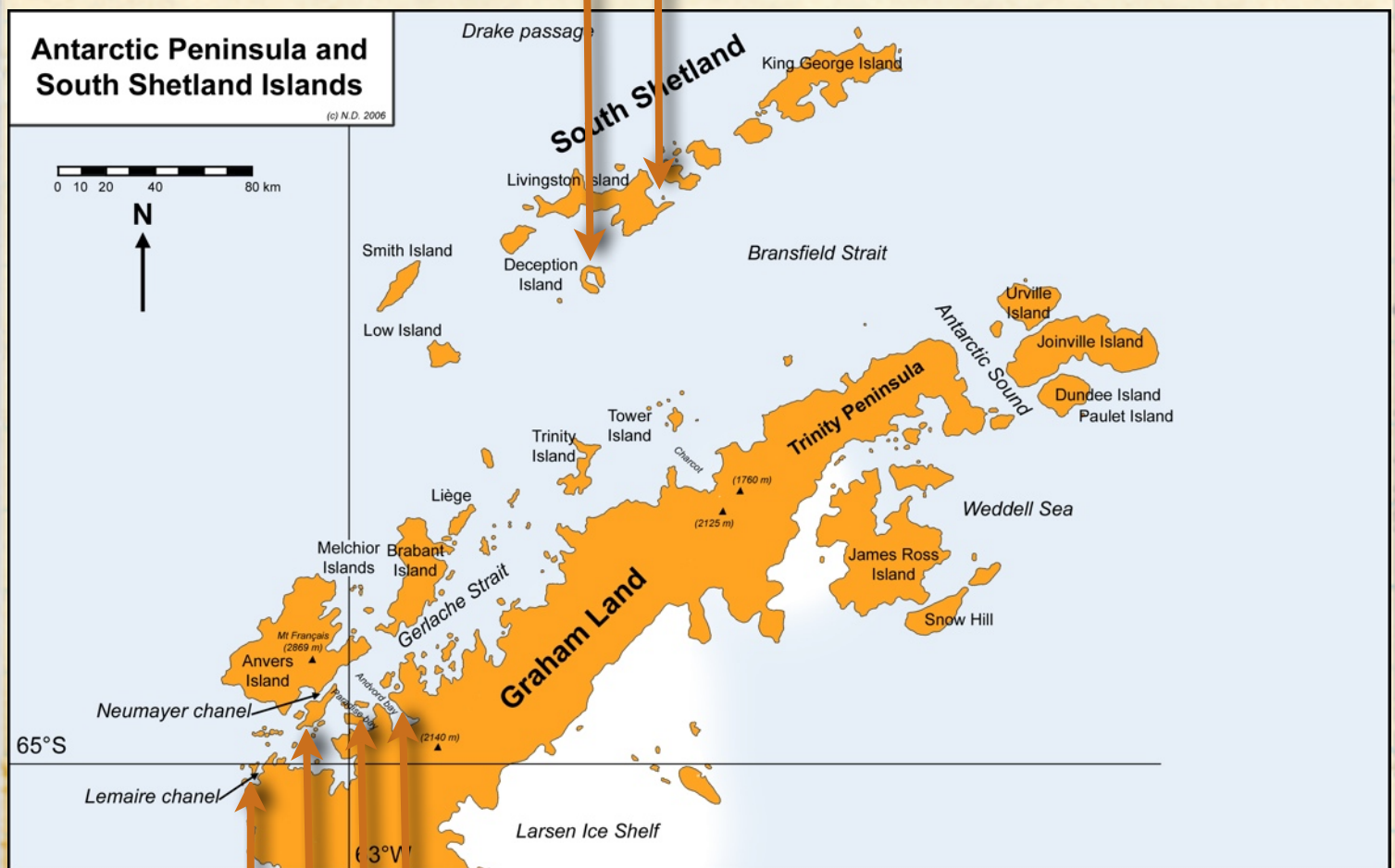


Humpback Whale

ANTARCTIC PENINSULA

Pendulum Cove and Telefon Bay

Half Moon Island



Neko Harbor

Paradise Bay

Port Lockroy

Peterman Island and Pleneau

WILDLIFE OF ANTARCTICA

BIRDS, MAMMALS AND PLANTS

Penguins 15 16 17 18 19 20 21 22 23

Magellanic Penguin	X							
Rockhopper Penguin								
Adelie Penguin					X			
Gentoo Penguin		X	X	X	X	X		
Chinstrap Penguin		X						
Macaroni Penguin								

Seabirds 15 16 17 18 19 20 21 22 23

Wandering Albatross	X							
Royal Albatross								
Buller's Albatross								
Grey-headed Albatross	X							
Black-browed Albatross	X							
Light-mantled Sooty Albatross								
Southern Giant Petrel		X			X	X		
Northern Giant Petrel	X	X	X	X			X	
Southern Fulmar								
Cape Petrel		X	X	X	X		X	
Antarctic Petrel								
Snow Petrel								
White-headed Petrel								
Kerguelen Petrel								
White-chinned Petrel		X					X	
Sooty Shearwater								
Blue Petrel		X						
Antarctic Prion		X						
Slender-billed Prion								
South Georgia Diving Petrel								
Wilson's Storm-Petrel		X	X		X	X		
Black-bellied Storm-Petrel		X						

Shags 15 16 17 18 19 20 21 22 23

Rock Shag	X							
Imperial Blue-eyed Shag			X					
Antarctic Blue-eyed Shag			X		X	X		

Jaegers, Gulls, Terns 15 16 17 18 19 20 21 22 23

Dolphin Gull	X							
Brown-hooded Gull								
Kelp Gull	X		X	X	X	X		
South American Tern	X							
Antarctic Tern			X		X	X	X	
Chilean Skua	X							
Brown Skua			X		X	X		
South Polar Skua			X		X	X	X	
Snowy Sheathbill			X		X			
Chimango Caracara	X							

WILDLIFE OF ANTARCTICA

BIRDS, MAMMALS AND PLANTS

Marine Mammals	15	16	17	18	19	20	21	22	23
South American Sea Lion									
South American Fur Seal									
Antarctic Fur Seal									
Southern Elephant Seal									
Leopard Seal					X	X			
Weddell Seal			X		X				
Crabeater Seal						X			
Peale's Dolphin									
Hourglass Dolphin									
Killer Whale					X				
Sperm Whale									
Southern Right Whale									
Minke Whale									
Sei Whale									
Fin Whale									
Humpback Whale			X		X	X			
Plants	15	16	17	18	19	20	21	22	23
Deschampsia antarctica			X		X	X			
Colobanthus quitensis						X			

Date	Location	Weather	Others
15-01-2008	Ushuaia	Partially cloudy	Embarkation day
16-01-2008	Drake Passage	Overcast	Sunny hours in afternoon
17-01-2008	Half Moon Island	Sunny	Afternoon landing/ Bailey Head
18-01-2008	Deception Island	Overcast	Antarctic Swim
19-01-2008	Neko Harbor/ Lockroy	Overcast/ Snowing	British Base
20-01-2008	Peterman Island/ Pleneau	Overcast/ Snowing	P.M Zodiac cruise
21-01-2008	King George Island	Overcast/ Strong Winds	No landings
22-01-2008	Drake Passage		
23-01-2008	Drake Passage		

List Compiled by onboard Naturalist Dennis Wille

willesaenz@racsa.co.cr

YOUR TEAM



ANTARCTIQUE
2007-2008